

WHY YOUR EXTERMINATOR USES GELS

Gel baits are internationally accepted as the most effective and convenient way to control cockroaches.



Whereas the traditional sprays kill the visible cockroaches but may conceal an underlying problem, gel baits are carried back to the main cockroach population.

Most cockroaches that consume the bait will be dead within two days, and the remaining population will be wiped out within a week under favourable conditions.

Gel baits are also more convenient: there is no need to clear the area or even cover food while they are applied, and the spots of gel are placed in out-of-the-way places where they will continue working for weeks, or even months, if new cockroaches arrive.



Bayer pest control products have a worldwide reputation for excellence. The purpose of our Total Cockroach Program is to help the Australian pest control industry educate their customers about the long-term benefits of using gel baits in preference to sprays (which we also manufacture) in order to shift the focus from cleaning up major infestations to preventing them, and to make sure that cockroaches do not become resistant to the most effective treatments available.

For more information,
ask your pest controller,
visit our website at
www.bayer.cropscience.com.au
or call us on
1800 223 002

The secrets of total cockroach control



KILLING THE MUTANT COCKROACHES TOO

Cockroaches have an uncanny knack of surviving against all the odds, but gel baits ensure that they can't just emerge from hiding once the treatment is over.

The gel baits don't last forever and will degrade over time or be consumed by the cockroach population. When this happens they are unable to control new infestations of cockroaches.

That's why experts strongly recommend a maintenance program to ensure that cockroaches are kept under control. Part of this recommended program is that the next application is with a gel product which contains a different insecticidal mode of action.

In this way the chance of resistance development in a population is reduced.

HOW SPRAYS & GELS COMPARE

	GELS	SPRAYS
Thorough population control	✓	✗
Long-lasting ongoing protection	✓	✗
Instant knockdown effect	✗	✓
No disruption to workplaces	✓	✗

WHAT YOU CAN DO TO HELP

Once you have had one cockroach infestation cleared up, there are some simple steps you can take to protect yourself against the problem recurring.

Keep it clean!

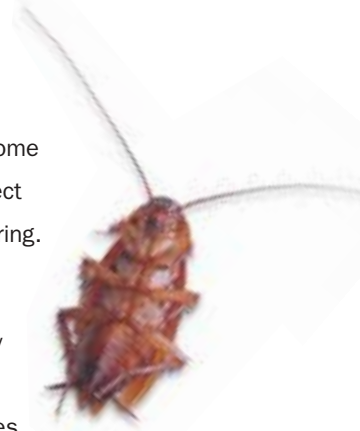
Good hygiene is essential, not only because it ensures that you are not leaving food for the cockroaches lying around, but also because clean surfaces make the presence of cockroaches easy to detect before things get out of hand.

Conduct spot searches

Cockroaches may be carried in on crates or boxes and other material and therefore new infestations may occur even if an existing problem has been solved.

It's a good idea to check the gel spots every once in a while to see if there is any further consumption after the first week. Remember that gel baits work by attracting cockroaches out of hiding in order to control them, so they can provide a useful early warning system when a new colony is being established.

If you spot signs of consumption, you may wish to consult your pest controller about their recommended course of action.



TIME TO CHANGE YOUR SPOTS?

By the time most people become aware of cockroach infestations, the population is firmly established. By that stage it may be difficult to eliminate the whole population at once. It may therefore be necessary to make a follow-up appointment with your pest controller.

Depending on the severity of the problem, and any history of infestations in the building, the second call may be after three, six or twelve months.

After that, we recommend check-up visits at least annually. Remember that there is no way of guaranteeing that cockroaches never re-enter the building, so seeing no further sign of them means the maintenance treatment is working.

Most people would prefer to be free of cockroaches rather than wait until they have a major problem on their hands, so a maintenance program is the way of ensuring this does not arise.

